

Purpose:

This lesson will demonstrate how to add “color” to songs by replacing certain chords shown in the music. We will focus specifically on replacing (dominant) 7th chords with different voicings and extensions of the chord. Hopefully, these concepts will also expand your chord “vocabulary” with respect to the fret board.

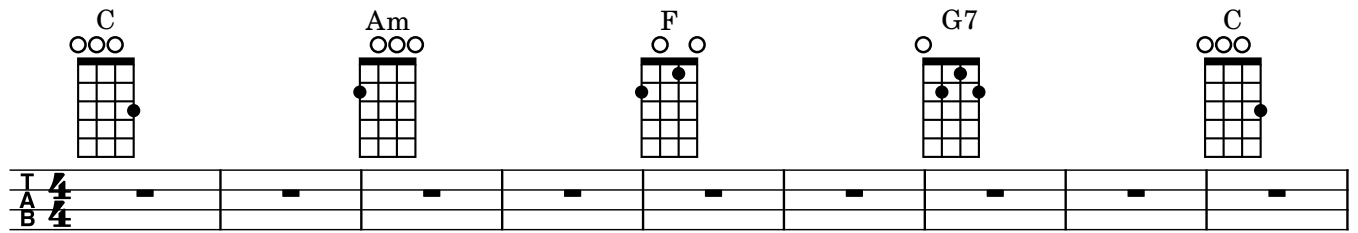
As a primer, please understand the following:

- Extensions are built by adding notes to a 7th chord. Typically, the notes added are 9, b9, #9, 13, b13, 11, #11, b5, aug(#5). Additionally, we can combine these notes to form more complex chords. For example: C13b9, D7b13, A7#5b9.
- Chord voicings use different fingerings on the fret board to represent the same chord but achieve a different sound.

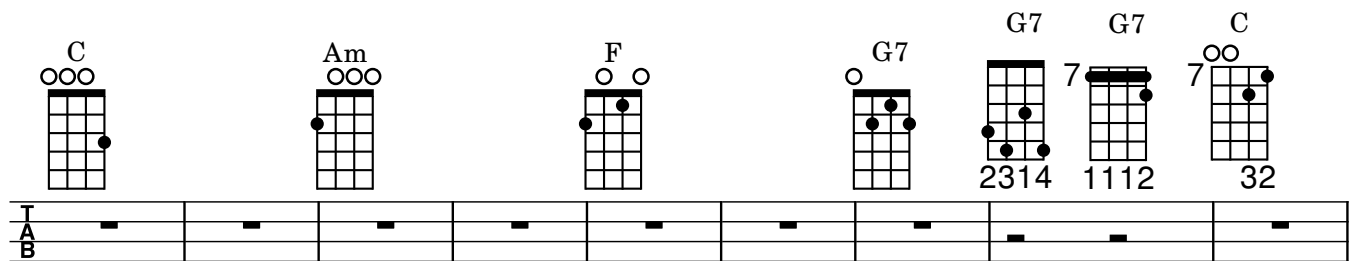
In both of these case, there are numerous references on the web that show these different chords on the ukulele.

The general takeaway from this lesson is to give you the ability, while playing to replace any 7th chord that you come across with some other chord that adds a little more flavor to the song. Start small. It’s not necessary to memorize all possible chords and voicings. The simplest thing to do in the beginning is use a 9th chord instead of a 7th.

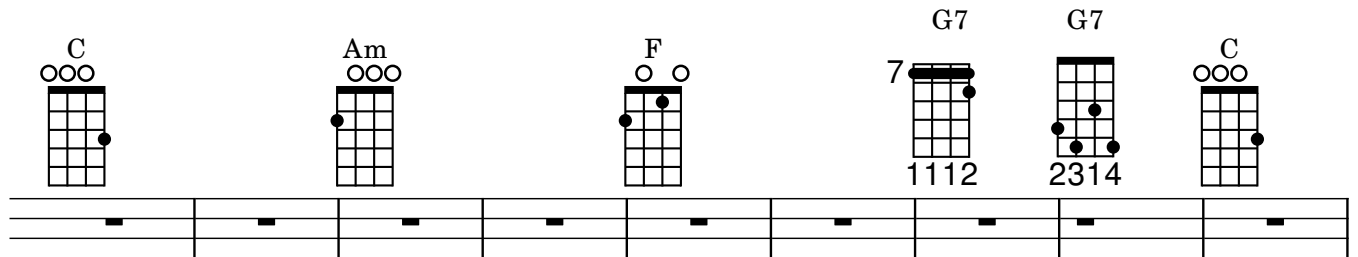
Examples



Basic

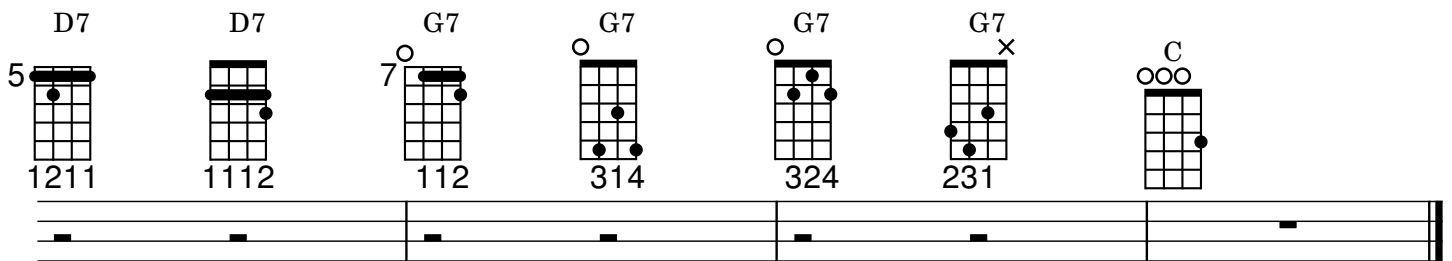
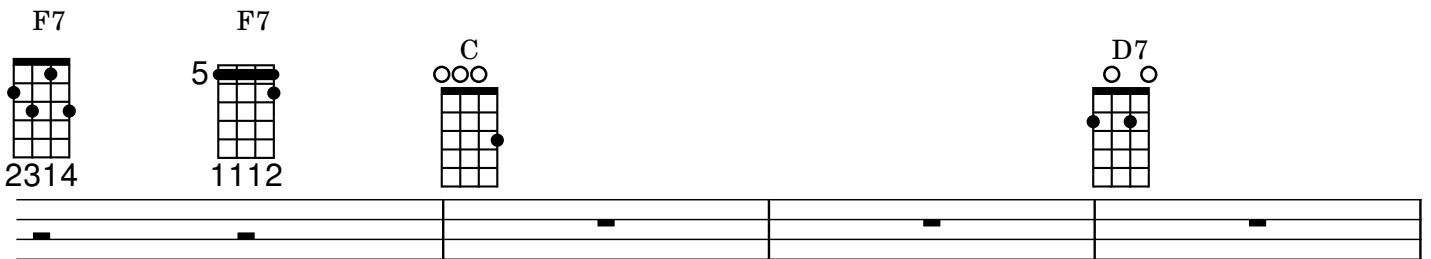
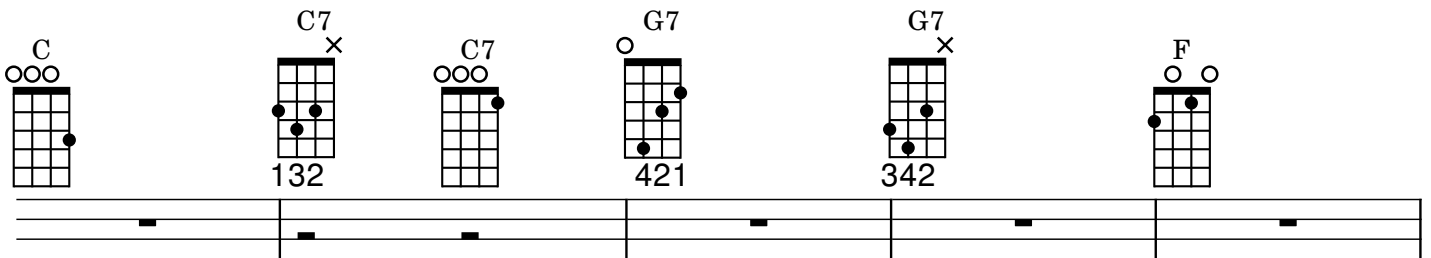
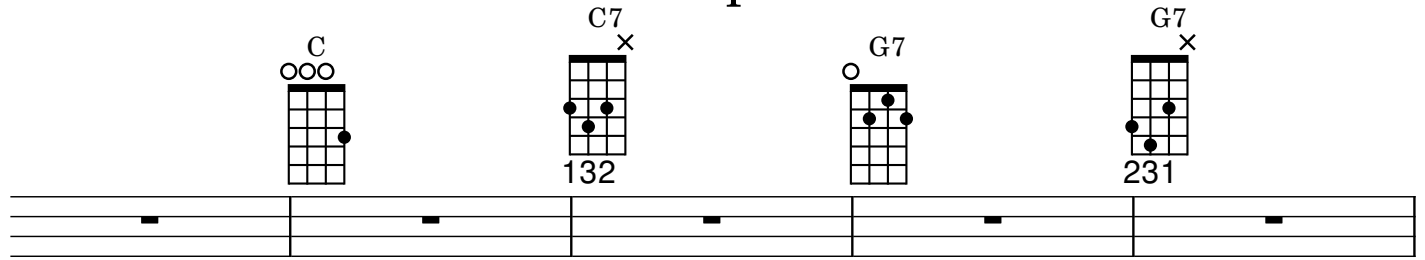


Example 1



Example 2

Example 3



Single strums per G7 chord

Shine On Harvest Moon

Nora Bayes / Jack Norworth

8

D7b13 D7 D7b13 D7 G7

2 31 2 3 2 31 2 3 421

Oh, shine on, shine on har - vest moon up in the

5

G9 C13 C9 F Gm7

421 132 21 3

sky. I ain't had no lovin since Jan - u - ar - y, Feb - ru - ar - y,

9

G#dim F D7b13 D7 D7b13 D7 D9 D7

2 31 2 3 2 31 2 3 5 1213 5 1211

June or Ju - ly Snow time ain't no time to

12

G7 G9 C13 C7

2314 231 132

stay out - doors and spoon, so shine on, shine on har - vest

16

F Bb9 F

2134

moon, for me and my gal.

18

D7^b13 D7 D7^b13 D7 D7^b9 G9

2 31 2 3 2 31 2 3 1234 1222

Oh, shine on, shine on har - vest moon — up in the

22

G9 C13 C9 C7⁺ F Gm7

2314 1234 21 3 2 3

sky. I ain't had no lo — vin since Jan-u-ar - y, Feb-ru-ar - y,

26

G[#]dim F D7^b13 D7 D7^b13 D7 D9

2 31 2 3 2 31 2 3 2143

June or Ju - ly — Snow time ain't no time to

29

G13 G9 C13 C7

1224 1222 132

stay — out-doors and spoon, so shine on, shine on har - vest

33

F B^b9 F

1324 2 13

moon, for me and my gal.

Are You Lonesome Tonight?

Roy Turk / Lou Handman

8 G Gmaj7 G6 G

Are you lone-some to - night, do you miss me to - night? Are you sor - ry we

7 E7 E7+ E9 D9

2223 12 3 1222 1213

8 drift - ed a - part? Does your mem-o - ry stray to a bright sum-mer

13 D7 D13 G13 G9+

1112 2 34 1224 1223

8 day, when I kissed you and called you sweet - heart? Do the chairs in your par - lor seem

20 C A7 A7 A9 A7+b9 D7 G

1 2 111 1 23

8 empty and bare? Do you gaze at your door - step and pic-ture me there? Is your heart filled with

27 Gmaj7 A7 A9 A7 A9 D7 D7 D13 D7

1 2 1222 1211 2 34 2 34 2 3

8 pain, shall I come back a - gain? Tell me dear, are you lone - some to -

32 G

8 - night? _____